

## Bunbury Regional Entertainment Centre

Troupe name & class	Latest Arrival Time	Approx. perform time
<b>Touch-</b> Snr Neo SUN 15TH	6pm	7:15pm
<b>Crescendo-</b> Jnr Neo WED 11TH	7:45am	8:30am
<b>Trainwreck-</b> Snr Lyrical SUN 15TH	5pm	6:30pm
<b>No mans land-</b> Inter Neo THURS 12TH	5pm	6pm
<b>Sixth breath-</b> Snr Contemp SUN 15TH	6:30pm	8pm
<b>Symphony-</b> Snr Classical WED 11TH	5:15pm	6:15pm
<b>Diamonds-</b> Jnr Lyrical FRI 13TH	11am	12pm
<b>Goldwing-</b> Level 4 Contemp THURS 12TH	7:45AM	8:30AM
<b>One night only</b> Snr Jazz WED 11TH	7:30pm	8:30pm
<b>Rise up-</b> Level 4 lyrical SUN 15TH	3:30pm	4:30pm
<b>Ashes-</b> Level 5/ IF lyrical WED 11TH	12:15pm	1:15pm

## Bunbury Eisteddfod- Important Information:

- Please allow extra time to find parking and the performance space.
- All dancers must arrive backstage with hair and make up completed a MINIMUM of one hour prior to their troupe being due on stage. See table left for times.
- Please ensure your dancer has all required costume, tights, hair pieces, earrings, shoes etc.
- It is a good idea to bring a water bottle, make up for touch ups, extra bobby pins and hair nets, and spare tights.
- Students must arrive stage ready with hair and makeup done, earrings in, headpiece on, and wearing a SCCD jacket/hoodie/vest and their own choice of leggings/shorts/pants (preferably black)
- Costumes should be brought in a labeled costume bag and changed into when instructed by teachers, not worn to the venue.



Full Programme can be found at [studioccdance.com](http://studioccdance.com) under the notes tab

\* Competition privates **will not** run week 7 (Mon 9th June- Sunday 15th of June)

**Monday 9th-** Classes as normal

**Tuesday 10th-** Classes as normal

**Wednesday 11th-**

All classes as normal except the following:

4:45-5:45 Gr 5 exam and Inter F ballet

5:45-6:15 Gr 4,5 and IF conditioning

Open Jazz- **cancelled**

Adv F and Adv 2- **cancelled**

**Thursday 12th-**

3:45- 4:45 Gr 1 exam

3:45- 4:45 Gr 3 exam

4:45- 5:15 Gr 3 conditioning

Intermediate/ Inter F open ballet- **cancelled**

Intermediate/ Inter F open conditioning- **cancelled**

Snr contemp- **cancelled**

Open ballet- **cancelled**

Conditioning- **cancelled**

**Friday 13th-** Classes as normal

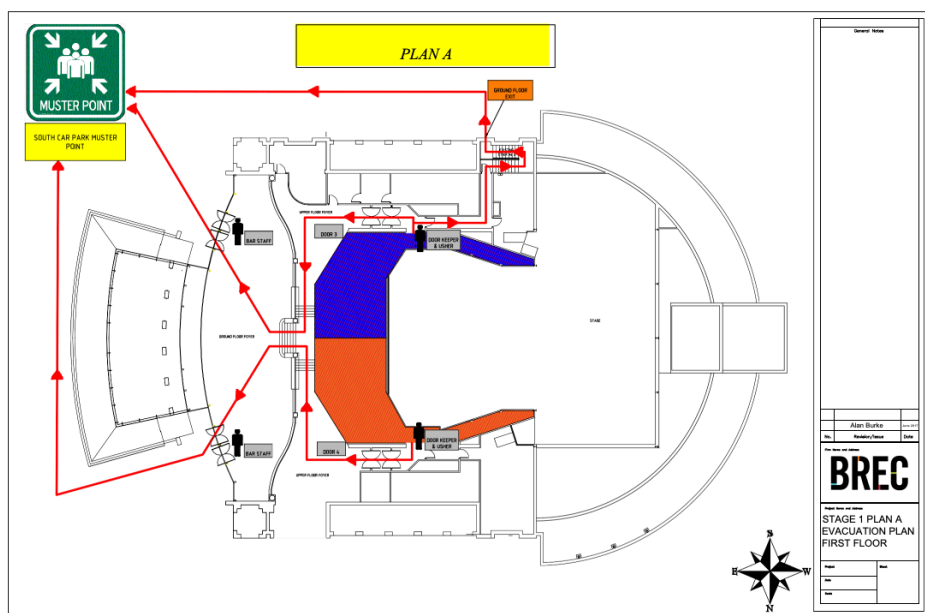
**Saturday 14th-** All classes **cancelled**

An updated version of the Final Program is attached and can be found via the studio website. A few last-minute minor adjustments were necessary due to issues that were only recently brought to the Eisteddfods attention. These changes include:

- Changes to competitor order within some sections
- One section move within the Friday morning session

### Green Room Procedures

- Competitor passes will no longer be issued
- Sign-in/out is no longer required each time a competitor moves in or out of the Green Room.
- Competitors must still be marked off at the Green Room desk if they are dancing in that session (or advise of a withdrawal)
- Competitors have free entry to the audience as usual. Those who are identifiable as competitors by their stage hair and makeup do not require a pass.
- Those competitors who are not identifiable by stage hair and makeup will require a pass to give to the volunteers at the door. This pass can be collected from the Green Room desk. If the competitor is not known to the person at the green room desk, they will be cross-checked against the competitor registration list
- In case of an emergency, all students must make their way safely and promptly to the designated assembly area "the grassed area" out the front of BREC where the carpark is and report to the teacher who is there for the session.



# TROUPE COSTUME REQUIREMENTS

- *Makeup as per concert PLUS FALSE EYELASHES (details and video tutorial under notes tab on studio website)*
- *No other jewellery or visible underwear to be worn.*
- *HAIR FOR ALL TROUPES, Hair parted in the centre and pulled into a flat ballet bun in the centre of the head, secured with a bun net and bobby pins. Hair spray and gel used.*

TROUPE NAME & CLASS	NOTES/REQUIREMENTS	DANCERS
TOUCH- Snr Neo 16/U neo troupe	<ul style="list-style-type: none"> <li>- Green leotard and tan skirt</li> <li>- Tan 3/4 tights</li> <li>- Headpiece- ribbon tied around ballet bun with bow at the bottom</li> <li>- Silver classical earrings</li> <li>- Clean canvas ballet flats tan colour ( foundation to match skin tone)</li> <li>- No nail polish or extra jewellery to be worn with costume</li> <li>- Full stage makeup</li> </ul>	
CRESCENDO- Jnr Neo 12/U neo troupe	<ul style="list-style-type: none"> <li>- Pink dress</li> <li>- Pink ballet tights</li> <li>- Pink comb headpiece secured on top of dancers bun in the centre</li> <li>- Silver classical earrings- available for purchase at Stepping Out Dance World</li> <li>- Clean leather ballet flats with crossed elastic</li> <li>- Please ensure you use hairspray or gel to ensure no fringes wispy bits for hair</li> <li>- No nail polish or extra jewellery to be worn with costume, skin coloured underwear or a bodystocking may be worn under costume</li> <li>- Full stage makeup</li> </ul>	<ul style="list-style-type: none"> <li>- Annabel B</li> <li>- Evie M</li> <li>- Sophie R</li> <li>- Tori M</li> <li>- Ava K</li> <li>- Damica T</li> <li>- Clancy S</li> <li>- Alayna E</li> <li>- Indiana D</li> <li>- Emma G</li> <li>- Sophia Y</li> </ul>

TROUPE NAME & CLASS	NOTES/REQUIREMENTS	DANCERS
TRAINWRECK- Snr Lyrical 16/U lyrical troupe	<ul style="list-style-type: none"> <li>- Navy lyrical costume</li> <li>- Tan 3/4 ballet tights</li> <li>- Applique Headpiece to be pinned on dancers left side</li> <li>- Lyrical earrings</li> <li>- Clean tan half soles</li> <li>- No nail polish or extra jewellery to be worn with costume</li> </ul>	
NO MAN'S LAND- Inter Neo 14/U neo troupe	<ul style="list-style-type: none"> <li>- White and blue leotard with white skirt</li> <li>- Pink ballet tights</li> <li>- Pearl headpiece secured with pins on top of dancers bun in the centre</li> <li>- Silver drop earrings- if lost or wish to buy new, can purchase from Lovisa (Miss Alanna can send through a photo)</li> <li>- Clean canvas ballet flats</li> <li>- No nail polish or extra jewellery to be worn with costume</li> <li>- Full stage makeup</li> </ul>	
SIXTH BREATH- Snr Contemp 16/U contemporary Troupe	<ul style="list-style-type: none"> <li>- Maroon leotard costume</li> <li>- 3/4 tan tights</li> <li>- No Headpiece</li> <li>- Classical earrings</li> <li>- Bare feet, ensure no nail polish</li> <li>- Please ensure you use hairspray or gel to ensure no fringes wispy bits for hair</li> <li>- No jewellery to be worn with costume, skin coloured underwear may be worn under costume</li> <li>- Full stage makeup</li> </ul>	
SYMPHONY- SNR Classical 16/U classical Troupe	<ul style="list-style-type: none"> <li>- Apricot tutu</li> <li>- Pink ballet tights</li> <li>- Rose gold tiara</li> <li>- Silver classical earrings (to allow for ease with quick changes)</li> <li>- Clean pointe shoes</li> <li>- No nail polish or extra jewellery to be worn with costume</li> <li>- Full stage makeup</li> </ul>	

TROUPE NAME & CLASS	NOTES/REQUIREMENTS	DANCERS
DIAMONDS- Jnr Lyrical 10/U lyrical Troupe	<ul style="list-style-type: none"> <li>- White full piece costume</li> <li>- Lyrical earrings available for purchase at Stepping Out Dance World</li> <li>- <u>3/4 length tan tights</u>- available for purchase at Stepping Out Dance World</li> <li>- Tan half soles- available for purchase at Stepping Out Dance World</li> <li>- Sparkle appliqué headpiece to be secured with pins on dancers left side around bun. Please ensure you use hairspray or gel to ensure no fringes or wispy bits for hair</li> <li>- No other jewellery to be worn with costume, skin coloured underwear may be worn under costume</li> <li>- Full stage makeup- video tutorial on <a href="https://studioccdance.com">studioccdance.com</a></li> </ul>	Ava G Georgia R Sophie R Tori M Alayna E Elijah T Indiana D Neveah H Valerie B Evie S Evie N Aurora Paige G Scarlett B Sophie L Billie
GOLDWING- level 4 Contemp 12/U contemporary Troupe	<ul style="list-style-type: none"> <li>- Blue/green leotard costume- please be careful when zipping up, the zips are fragile</li> <li>- Black footless 7/8 tights over leotard - available for purchase at Stepping Out Dance World (<a href="https://stepping-out.com.au/">https://stepping-out.com.au/</a>)</li> <li>- No headpiece</li> <li>- No earrings</li> <li>- Bare feet, ensure no nail polish</li> <li>- Please ensure you use hairspray or gel to ensure no fringes wispy bits for hair</li> <li>- No jewellery to be worn with costume, skin coloured underwear may be worn under costume</li> <li>- A body stocking may be worn underneath this costume</li> <li>- Full stage makeup- video tutorial on <a href="https://studioccdance.com">studioccdance.com</a></li> </ul>	<ul style="list-style-type: none"> <li>- Anna</li> <li>- Beth</li> <li>- Char S</li> <li>- Char Y</li> <li>- Abigail</li> <li>- Emily</li> <li>- Emine</li> <li>- Georgia</li> <li>- Isabelle</li> <li>- Isla</li> <li>- Lili</li> <li>- Milla</li> <li>- Shardeney</li> </ul>

TROUPE NAME & CLASS	NOTES/REQUIREMENTS	DANCERS
ONE NIGHT ONLY- Snr Jazz 16/U- jazz Troupe	<ul style="list-style-type: none"> <li>- Silver costume</li> <li>- Silver headpiece secured in on dancers right side</li> <li>- Lyrical earrings</li> <li>- Full length footed tan tights</li> <li>- Tan jazz shoes</li> <li>- No nail polish or extra jewellery to be worn with costume</li> <li>- Full stage makeup</li> <li>- Please feel free to adjust straps if you wish to make tighter</li> </ul>	
RISE UP- level 4 lyrical 12/U lyrical troupe	<ul style="list-style-type: none"> <li>- Pink lyrical costume- a body stocking may be worn underneath</li> <li>- Straps can be tightened if you wish</li> <li>- Tan 3/4 tights</li> <li>- Pink metal headpiece secured on dancers left side</li> <li>- Lyrical earrings</li> <li>- Clean tan half soles</li> <li>- No nail polish or extra jewellery to be worn with costume</li> <li>- Full stage makeup</li> </ul>	<ul style="list-style-type: none"> <li>- Anna</li> <li>- Beth</li> <li>- Char s</li> <li>- Char y</li> <li>- Abigail</li> <li>- Emily</li> <li>- Emine</li> <li>- Georgia</li> <li>- Isabelle</li> <li>- Isla</li> <li>- Lili</li> <li>- Milla</li> <li>- Shardeney</li> <li>- Evie W</li> </ul>
ASHES- level 5/ Inter F 14/U lyrical troupe	<ul style="list-style-type: none"> <li>- Silver lyrical costume</li> <li>- Tan 3/4 tights</li> <li>- Black clip headpiece to be secured on top of dancers bun</li> <li>- Lyrical earrings</li> <li>- Clean tan half soles</li> <li>- No nail polish or extra jewellery to be worn with costume</li> <li>- Full stage makeup</li> </ul>	